

Landscape changes since the end of the 18th Century and it's perception in the District of Göttingen

Dipl - Eng. Linda Szűcs, Prof. Dr. Renate Bürger-Arndt

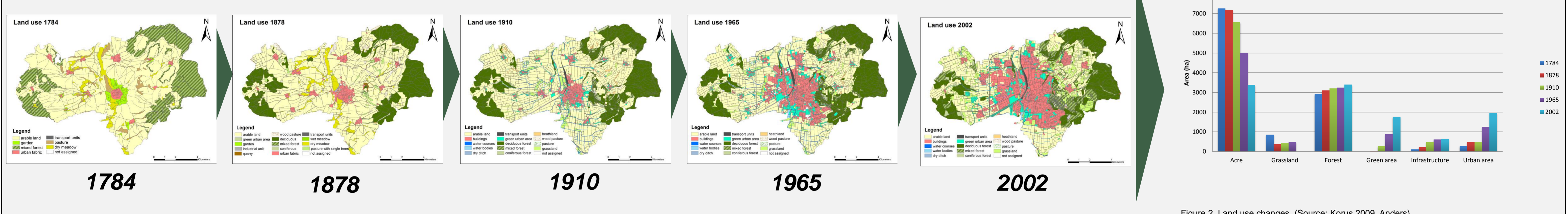
Faculty of Forest Sciences and Forest Ecology, Department of Nature Conservation and Landscape Management
Graduate School Interdisciplinary Environmental History
Georg-August-University of Göttingen

Academic Aim

In the past two centuries, there has been a dramatic change of the landscape within the district of Göttingen following different stages of economic land use. The change was accompanied by several transformations of biodiversity, human usage potential, and perceivable forms of appearance (e.g. landscape design) accordingly. The aims of this project are:

- (1) to visually reconstruct the historic transformation of landscapes since the end of the eighteenth century (*Visualization Stage*), and
- (2) to evaluate its aesthetic perception (reception) and evaluation today (*Evaluation Stage*).

We draw our data from multiple monographic and cartographic sources, as well as photographic content. To achieve an accurate and holistic visualization of the Göttingen landscape we base our analyses on different time intervals following the analyses of Korus (2009) Preutenborbeck (2009) Anders (in process):



Methodology & Materials

Based on the analysis of land use changes (Fig.2) the case study of the Manor Kerstlingeröder Feld has been chosen. It represents a relict of a cultural landscape whose land use history refers to the 14th century. It has been – uncontinuously- used from 1346 till 1938 as an agricultural landscape, from 1938 till 1992 as a military area and since 2004 it belongs to the flora-fauna habitat conservation area.



The methodological approach of the reconstruction is how to use different historical materials like (1) historical maps, (2) copper engravings, paintings from different artists, (3) postcards, (4) old satellite images, (5) old photographs and (6) descriptive materials to reconstruct land use changes in a 3 Dimensional form. Visualization has been created with Visual Nature Studio 3.

Preliminary Results



Contact: Dipl - Eng. Linda Szűcs
Georg-August University of Göttingen
Faculty of Forest Sciences and Forest Ecology,
Department of Nature Conservation and Landscape Management
Büsgenweg 3
D - 37077 Göttingen
Germany
Phone: +49 551 3922326
Fax: +49 551 393415
Email: lszucs@gwdg.de
Homepage: <http://naturschutz.uni-goettingen.de>

DFG Deutsche Forschungsgemeinschaft



Graduate School
Interdisciplinary
Environmental History

GEORG-AUGUST-UNIVERSITÄT
GÖTTINGEN

References:
KORUS, K. (2009) Historical-ecological landscape-analysis about the City of Göttingen, Master Thesis, University of Göttingen
ANDERS, U. (in process) Consequences of Land use changes in central Europe during the 19th and 20th centuries and the impact for forest ecosystems, Dissertation in process, University of Göttingen
PREUTENBORBECK, J. (2009) Zur Wirkung historischer Landnutzungsmuster auf Artenvielfalt und Lebensgemeinschaften: Eine Exemplarische GIS-Gestützte Analyse von Landnutzungswandel und Biodiversität der Kulturlandschaft im Naturraum Göttinger Wald. Georg-August Universität Göttingen.